

Spit Driva® Self Drilling Plasterboard Anchor

The original self drilling plasterboard anchor, quick and easy to install using only a screwdriver.



Substrates

- Plasterboard - dry partition walls
- Aerated concrete (with pre-drilled hole Ø 8mm)

Applications

- Bathroom accessories
- Fuse boxes
- Bracketry
- Signage
- Mirrors
- Dado rails
- Radiators (Driva® Plus only)
- Trunking (Mini Driva®)

ALSO AVAILABLE

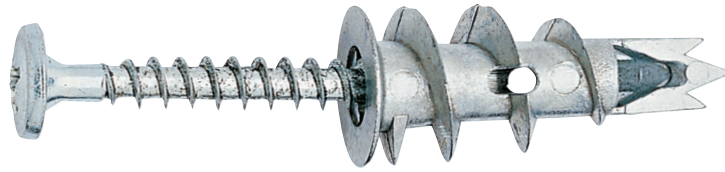
Driva® TP12 Tub:

Highly visible Driva® TP12 filled into a re-sealable / refillable plastic tub. Contains 500 pieces.



Available in bag packaging:

Refer to page 165 for further details on the bag range



Features and Advantages

- High strength Zamak 3 body
- A range of fixings for different applications
- Positive tightening of the anchor
- No need for pre-drilling
- Corrosion resistant
- Point breaks away if an overlong screw has been used
- Removable
- Head sits flush behind fixture
- Low profile head
- Screw thread profile - designed for efficient cutting and ensures a positive lock
- No maximum or minimum plasterboard thickness (excluding Driva® Plus)
- Driva® Plus combines screw and clamp fixing
- Mini Driva® for fixing trunking to plasterboard

Technical Specification

One piece self drilling anchor designed for fastening light / medium loads to plasterboard. For use in plasterboard, simply screw using a normal or power screwdriver. The point drills a pilot hole followed by a coarse, specifically designed helical thread biting into the plasterboard substrate making the fix. The separate screw is then used to mount the fixture.

When using standard Driva® in aerated concrete it is necessary to drill a 8mm diameter pilot hole.

Driva® Plus works in the same way as standard Driva® in plasterboard, but is designed for fixing heavier loads. The additional hinged toggle swivels and pulls towards the inner face of the cavity through the action of the mounting screw. This gives a combined screw and clamp fix.

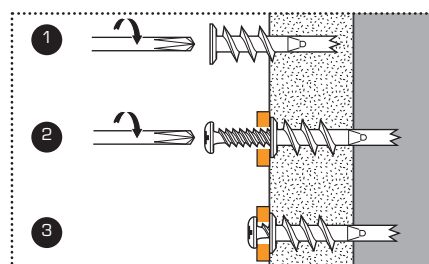
Mini Driva® is used on its own, whereas other Driva® products require a screw to secure the fixture, and in the case of Driva® Plus, rotate the toggle.

Material - Anchor Body

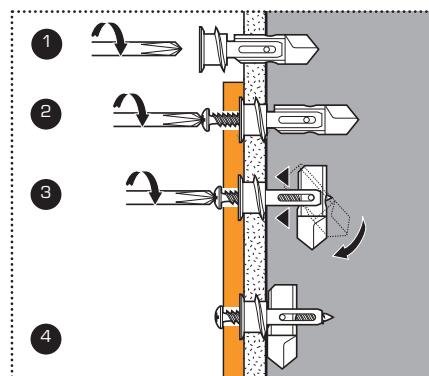
Driva®, Driva® Plus, Mini Driva® - Zamak 3

Driva® LD - Glass Fibre Reinforced Nylon Polyamide

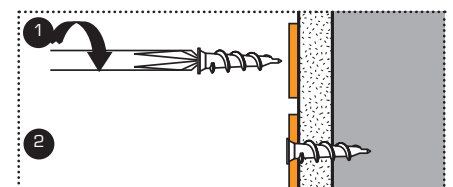
Installation - Driva®



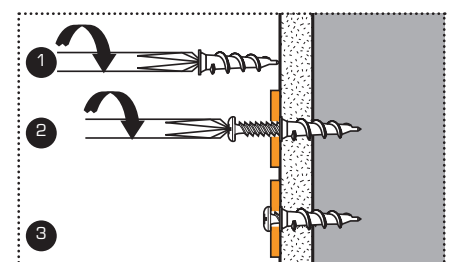
Installation - Driva® Plus



Installation - Mini Driva®



Installation - Driva® LD



Driva® Original Self Drilling Plasterboard Fixing

The fastest self drilling plasterboard fixing - Good pull-out values with efficient dust disposal. 100% Zamak.



Eurocode	Description	Anchor Length	Screw Length	Drill Ø*	Max Fixture Thickness	Box Qty
059360	Driva® TP12	31mm	35mm	8mm	12mm	100
059380	Driva® TF27	31mm	50mm	8mm	27mm	100
059370	Driva® TF5	31mm	25mm	8mm	5mm	100
059910	Driva® F12 (Plastic)	31mm	35mm	-	12mm	100

* For pre-drilling into aerated concrete.

Mini Driva® One Step Self Drilling Plasterboard Fixing

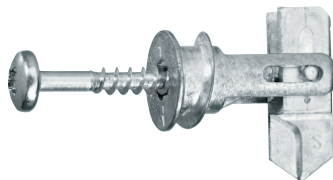
Ideal for fixing mini trunking, skirting boards and beading - One step installation saves time, leaving a fine finish. 100% Zamak.



Eurocode	Description	Anchor Length	Head Ø	Hole Ø	Max Fixture Thickness	Box Qty
059430	Mini Driva®	25mm	7.5mm	5mm	5mm	200

Driva® Plus Self Drilling Plasterboard Fixing

Self drilling anchor for heavy loads - Clamp fix system enables high performance in plasterboard. 100% Zamak.



Eurocode	Description	Anchor Length	Screw Length	Max Fixture Thickness	Box Qty
061190	Driva® Plus TP12*	39mm	45mm	12mm	100
061200	Driva® Plus TF30**	39mm	60mm	30mm	100

* TP = Pan Head ** TF = Countersunk

Driva® LD Self Drilling Non Conductive Plasterboard Fixing

Fast anchor for light loads - Constructed from a mix of nylon and fibreglass, for electrical installations.



Eurocode	Description	Anchor Length	Screw Length	Max Fixture Thickness	Box Qty
058850	Driva® LD TP12	30mm	25mm	12mm	200

Driva® TP12 Tub



Eurocode	Description	Anchor Length	Screw Length	Drill Ø	Max Fixture Thickness	Tub Qty
055562	Driva® TP12 500pc Tub*	31mm	35mm	8mm	12mm	500

* Must be ordered by the pallet, in multiples of 48.

Driva® TP12 Kit with Screwdriver



Eurocode	Description	Kit Qty
074180	Driva® TP12 200pc Kit with Screwdriver	200